

# BL2-58

## COMPACT & PORTABLE

Windows 2000  
XP/Vista

### Features

- Available with Li-ion battery or AC adapter
- 80mm/sec. printing speed
- Horizontal or wall-mount installation
- Drop-in paper loading
- Black or white case color
- Available for use with label paper (option)



# BL2-58

## Features

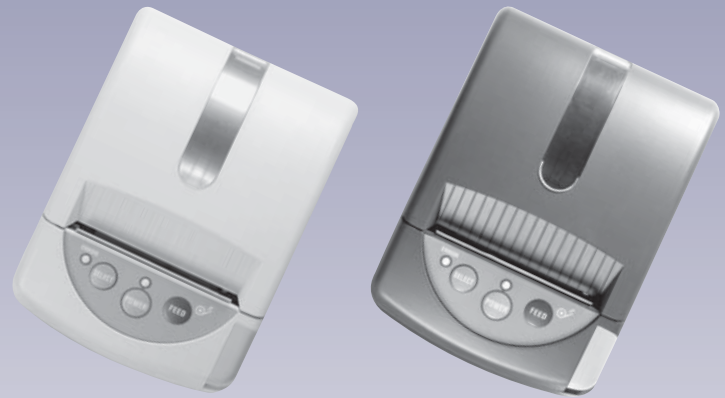
Small footprint and lightweight  
 Available with Li-ion battery or AC adapter  
 80mm/sec. high printing speed  
 Drop-in paper loading  
 Available for use with label paper (option)  
 Horizontal or wall-mount installation  
 Black or white case color

## Applications

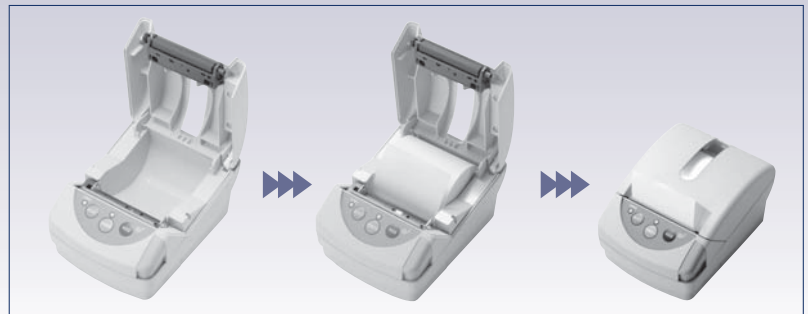
Receipt and ticket  
 Medical instruments  
 Label  
 Coin-counter  
 Credit card  
 Test instruments

## Accessories

Paper roll  
 AC adapter



## Drop-in paper loading



|                                      |  |
|--------------------------------------|--|
| <b>Printing method</b>               | Direct line thermal  |
| <b>Resolution</b>                    | 203dpi (8dots/mm)  |
| <b>Number of dots</b>                | 384dots  |
| <b>Paper width/ Printing width</b>   | 58mm/48mm  |
| <b>Printing speed</b>                | Max.80mm/ sec  |
| <b>Interface</b>                     | Serial(RS232C), Parallel, USB  |
| <b>Character font (W x H)</b>        | Font A : 12 x 24dots Font B : 8 x 16dots   |
| <b>Character dimensions (W x H)</b>  | Font A : 1.5 x 3.0mm Font B : 1.0 x 2.0mm  |
| <b>Number of columns</b>             | 32 (Font A) 48 (Font B)  |
| <b>Character type</b>                | Alphanumeric, International, PC-437/850/852/857/858/863/865/866/WPC1252 Katakana                     |
| <b>User-defined logo/ Characters</b> | User-defined logo and Characters can be registered in flash memory                                   |
| <b>Barcode types</b>                 | JAN8/13, CODE39/128, ITF, CODABAR, UPC-E/A<br>2D Barcode (Options) : QR, Maxcode, PDF417, DataMatrix |
| <b>Input buffer</b>                  | 8k bytes   |
| <b>Emulation</b>                     | ECS/POS conformity   |
| <b>Power supply</b>                  | AC adapter : AC100/120/240V±10% 50/60Hz<br>Battery : Rechargeable Li-ion (7.4V/ 2500mAH)             |
| <b>Operating condition</b>           | -10 to 50 °C, 10 to 85%RH (Non condensation)   |
| <b>Storage condition</b>             | -20 to 60 °C, 10 to 90%RH (Non condensation)   |
| <b>Reliability</b>                   | Wear resistance : 50Km, Pulse resistance : 100 million pulse   |
| <b>Dimensions</b>                    | 93(W) x 125(D) x 70(H)mm   |
| <b>Mass</b>                          | Approx. 250g (Without paper roll and battery)  |
| <b>Safety standards</b>              | VCCI, CE, FCC  |
| <b>Options</b>                       | Li-ion battery pack, 2D barcode, Label version, Interface cable                                      |

\*Windows is registered trademark of Microsoft Corporation in the United States and other countries.

\*ECS/POS is registered trademark of Seiko Epson Corporation.

\*All specifications are subject to change without notice.

Distributed by



**SANEI ELECTRIC INC.**

[www.sanei-elec.co.jp](http://www.sanei-elec.co.jp)

**Headquarters :**

5F, Taisou-Ikebukuro Building, 2-61-1 Ikebukuro, Toshima-ku, Tokyo 171-0014, Japan

Phone: 81-3-3986-1188 Fax: 81-3-3988-5876

